

Rockpanel Colours

COLOUR YOUR  
IMAGINATION



**Rockpanel**<sup>®</sup>

MADE  
FROM STONE.<sup>™</sup>



**Colours make  
all the difference**



**Colour is everywhere.  
It provides us with inspiration and joy.  
It fuels our imagination.**

Rockpanel Colours are specifically designed for buildings that need to stand out. That need that little bit of extra.

Whether applied in one colour, in several tones or in contrasting colours, every facade can have a completely different look and feel. It can blend into the environment or can be designed to act as an eye-catcher.

Our cladding derives their unique properties from compressed basalt, which is a sustainable, readily available natural volcanic material from which all Rockpanel Colours cladding is produced. The products combine the advantages of stone with the workability of wood.

We would like to show you our world of Rockpanel Colours. To share the projects that have been constructed and the stories behind them.

Because we know that every building has a story to tell.  
A story that is best told in colour.

## **Experience the endless possibilities of Rockpanel Colours**

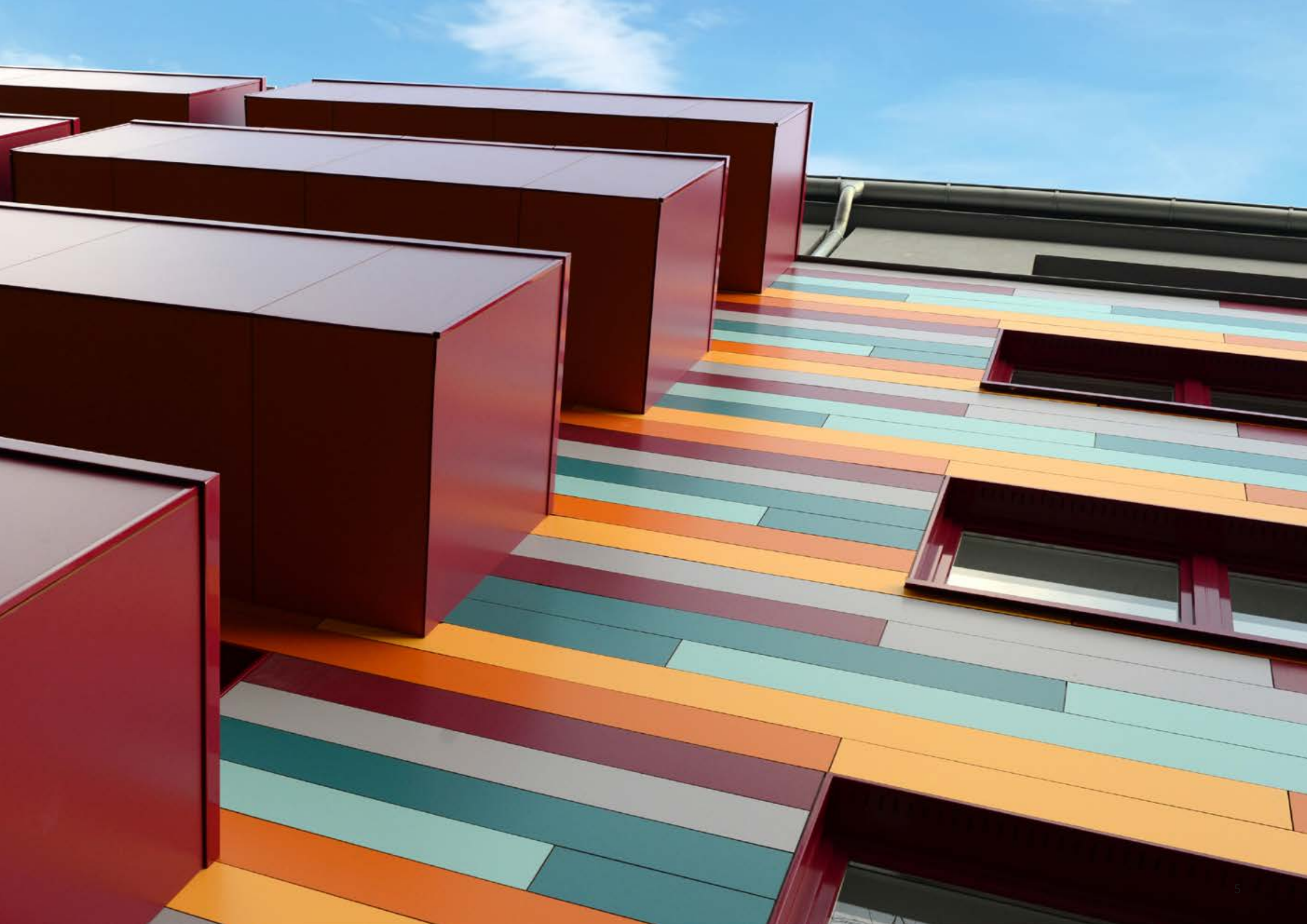
There is so much you can do with Rockpanel Colours. Its exceptional aesthetic qualities allow for maximum design freedom. And with the vibrant and lively colour palette available, the possibilities are endless.

Either choose to make a bold statement or go for a more subtle approach. You are very flexible in your design choices, with a wide range of colours and designs to choose from.

The cladding can also be easily replaced at any point, providing even more flexibility in aesthetics. Furthermore, it is fire-safe, low-maintenance, durable, easy to install and has excellent colour fastness.

The perfect choice for any facade!





## Unlimited design freedom

Want to create something truly unique? A one-of-a kind, tailor-made facade based on your specific wishes? Rockpanel Colours provides you with unlimited freedom of design, fulfilling even the highest architectural demands and allowing you to realize your most creative ambitions.

With a wide range of colours available, almost any design or colour combination is possible. And what's more, we can even create custom colours to match a company's visual identity for example. Whatever colour, design or shape you have in mind, Rockpanel is up to the challenge.

## Most complete range of colours

Let your facade blend into the environment. Or emphasise its features in an urban setting. Enjoy complete freedom in the design of your building – in almost any colour of your choice.

In addition to our colour palette of more than 144+ RAL/NCS colours, you can choose almost any RAL/NCS to express your imagination. Just contact us and we'll be happy to help you.

## Brand it

When creating a facade, the importance of the visual appearance cannot be ignored. Would you like the new facade to closely match the existing surroundings?

Or would you rather let it stand out from the crowd? Rockpanel Colours have what it takes – a wide variety of standard, special and custom colours to create a fully customised look & feel.



## **Bend, curve and perforate**

To obtain the best possible result, even the smallest details matter. Thanks to our extensive colour range, you'll always find the perfect match for your project.

Bend, curve, perforate, cut, shape & combine colours, patterns and other Rockpanel products to fully customize your design. Mix and match any way you like to create your own unique facade.

## **Elegance and excellence**

Designing your dream building? Then you know that even the smallest details matter. Like you, we have a similar desire to pursue design elegance and excellence.

Rockpanel Colours therefore offers multiple corner solutions to match any design. It is down to your creativity and personal choice to give your project the specific look & feel you are looking for.

## **Even more protection with ProtectPlus**

Looking for extra protection for your facade?

The transparent ProtectPlus layer further strengthens the UV resistance and offers increased selfcleaning capacity. That means most of the dirt on the facade is simply washed away by rainwater. Due to its protective layer even graffiti can be removed.

Rockpanel Colours can be optionally finished with a ProtectPlus layer.



# Designed from the air

The colourful blind facades of four flats in Emmeloord, the Netherlands, were inspired by an aerial view of the Noordoostpolder with its agricultural fields and farmhouses.

The image shows a colourful composition of light, dark and striking colours.

The multi-coloured panels form a timeless and striking mosaic, creating a unique facade for each flat.



**Project:** Renovated flats, Emmeloord, The Netherlands





**Used colours for this project:**

RAL 2012, RAL 010 30 44, RAL 350 40 35, RAL 4007,  
RAL 250 50 10, RAL 9010



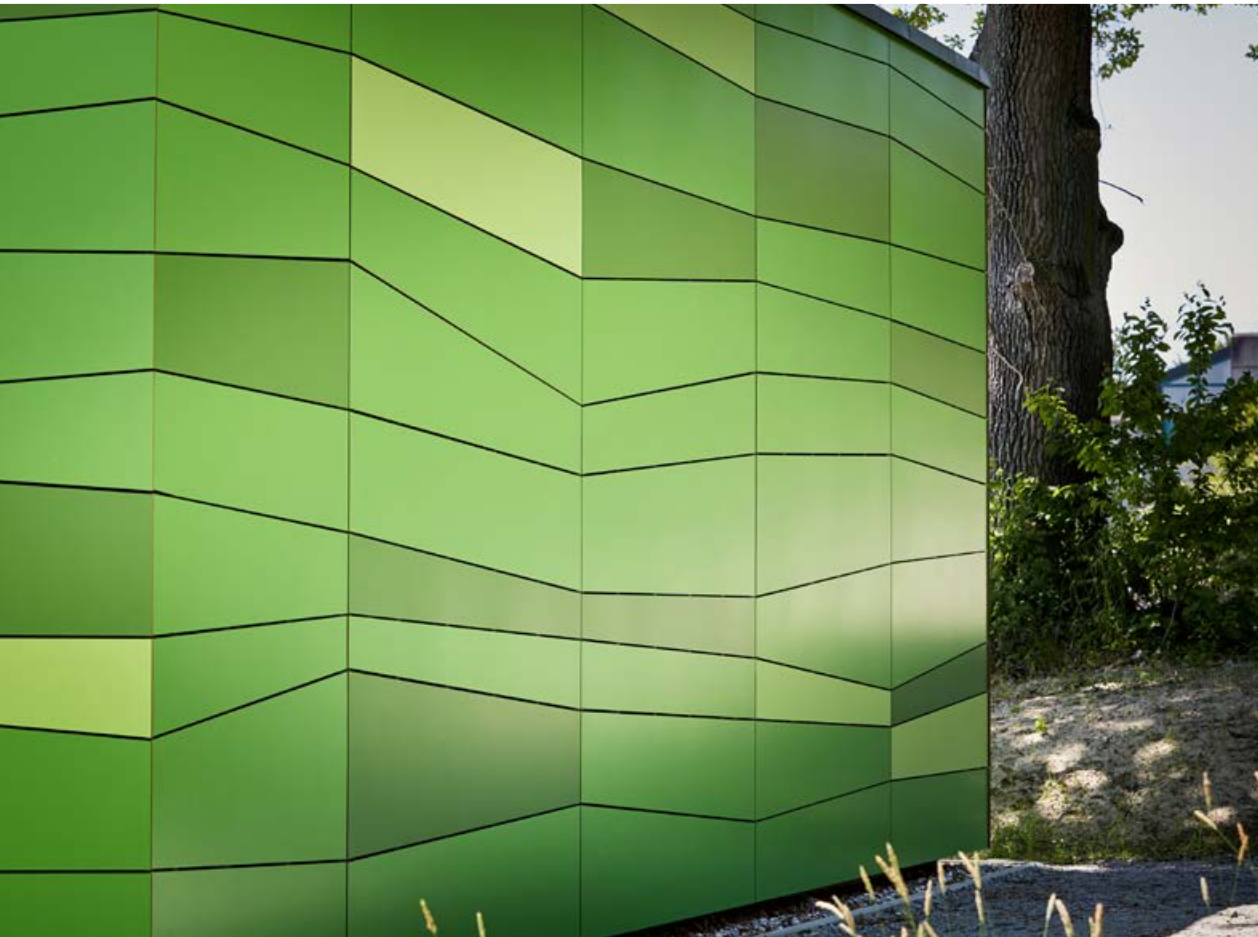
**Project:** Betty-Greif-School, Pfarrkirchen, Germany





Used colours for this project:

RAL 130 50 40, RAL 6018, RAL 120 70 50

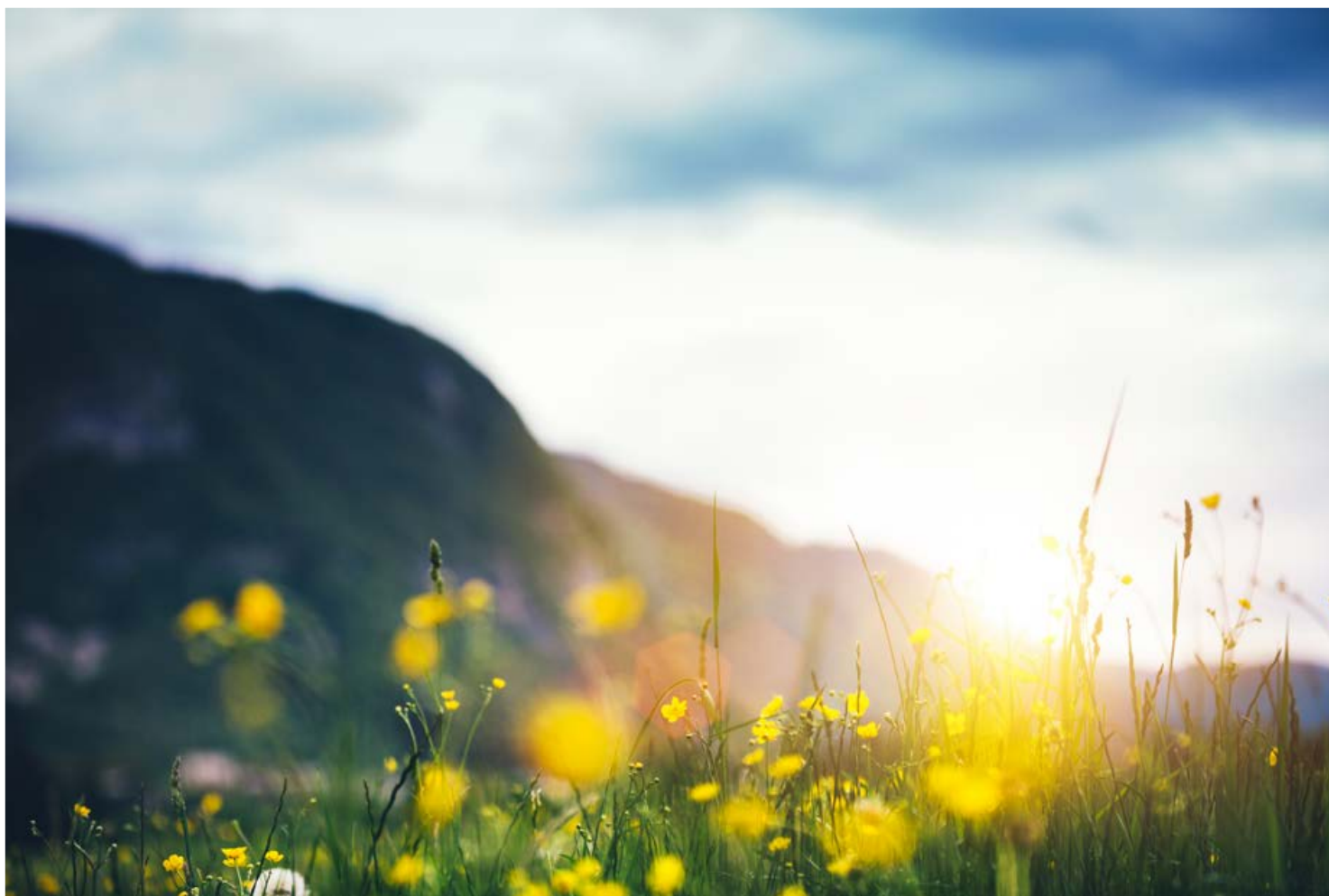


## Playful green colour palette

Playful and colourful often go hand in hand. As was the case at the Betty-Greif-School in Germany. The school wanted a child-friendly and playful facade and opted for the extensive colour palette offered by Rockpanel Colours.

The colourful facade consists of panels in three different shades of green installed in random order. The result, a fun-looking building that perfectly combines form, appearance and function.

Used colour for this project: RAL 070 70 60





## Daring to stand out

Sometimes the power of a colour is so strong that no other colours are needed. Hence, the reason why the facades of an apartment complex in Winterthur, Switzerland, were clad with one striking colour.

The bright yellow residential buildings really stand out. And clearly match the yellow flowers in the surrounding landscape.

**Project:** Apartment complex, Winterthur, Switzerland

# Grey doesn't have to be dull

Modern, sustainable and distinctive. That's the definition of a Belgian couple's dream house.

The protruding parts of this imposing house are clad in grey panels, which contrast beautifully against the white plastered walls of the building. The panels are applied in different widths and heights for an interesting, sleek and modern linear pattern.



**Project:** Passive house, Amay, Belgium



Used colour for this project:  
RAL 7039







Used colours for  
this project: RAL 7037,  
RAL 7024, RAL 7012,  
RAL 070 70 60

## Inspired by local heritage

The new, modern buildings of the Derby Cathedral school pay homage to the district's industrial heritage. The entrance with canopy is inspired by the large porticoed entrance to the famous Neo Georgian Council House in Derby.

The facades are clad with perpendicular installed rectangular panels in three shades of grey combined with yellow. The colour combinations form a welcome contrast with the red brick facade.

**Project:** Derby Cathedral School, Derby, United Kingdom



# Facade expresses individual identity

The new iconic building of the University Technical College in Doncaster, UK, reflects the identity of its users.

The school supports gender neutrality and wants to promote equal opportunities. This is also reflected in the brand colours; various neutral shades of grey and three accent colours, which have also been used for the facade.

This creates a distinctive building with a professional, contemporary and inviting look and feel.



**Project:** Doncaster Civic Quarter College, Doncaster, United Kingdom



Used colours for this project:

RAL 7004, RAL 070 70 60, RAL 7036, RAL 5021, RAL 350 40 35



# A facade with a corporate identity

The colour and design of this striking facade of the new Mazak headquarters in Denmark is inspired by the Koi carp, and are a tribute to the company's Japanese heritage. Moreover, Mazak's logo is also bright orange.

Thanks to the LED lighting, the facade not only stands out during the day, but also at night.

Project: Mazak headquarters, Middelfart, Denmark



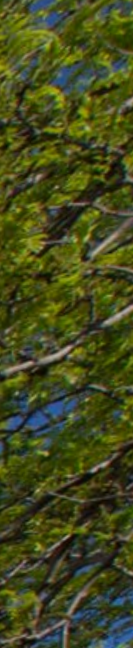
Used colours for this project: RAL 2004, RAL 9010





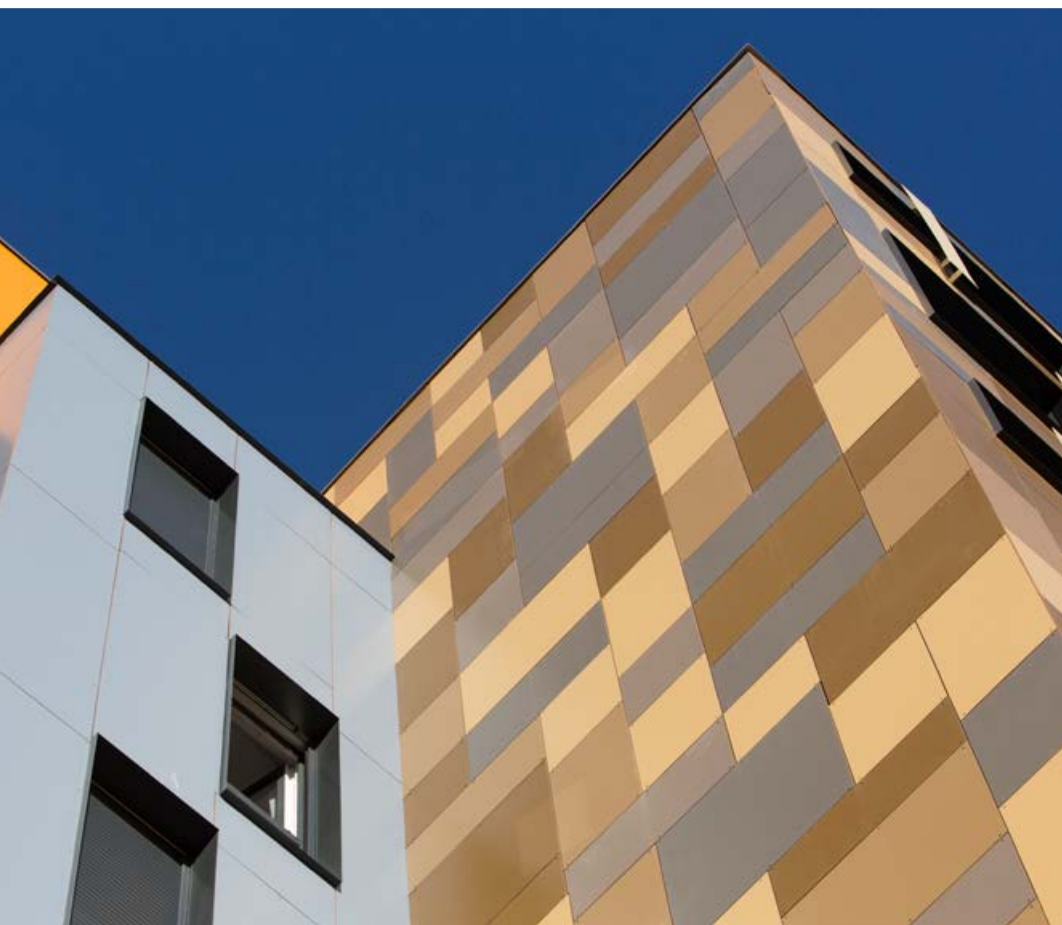


**Project:** Le Petit Train Hotel, Montpellier, France



**Used colours for this project:**

RAL 075 40 30, RAL 7006, RAL 080 40 05, NCS S 3030-Y10R,  
NCS S 5020-Y10R, RAL 250 50 10, RAL 070 60 75,  
RAL 095 70 10



## An explosion of colours

Colour was a key element in the design of this hotel and student residence in Adagio in Montpellier.

The architect took on the challenge to transform a plain concrete building into an impressive, modern-looking hotel that features a patchwork of Rockpanel Colours facade boards.

The ambition was to create a building with impact that looks different from every angle. A lot of thought went into the layout of the facade, ensuring a perfect rhythm of colours. The result is quite spectacular!

# Traditional Swedish red

You can't miss them when in Sweden: the typical red, wooden houses that take on a different look depending on the light.

The colourful facades of three residential buildings in the new Solängen district in Årjäng, Sweden, were inspired by these houses.

The different shades of red contribute to the natural look and feel and adds liveliness to the facade.



**Project:** Apartment building, Årjäng, Sweden





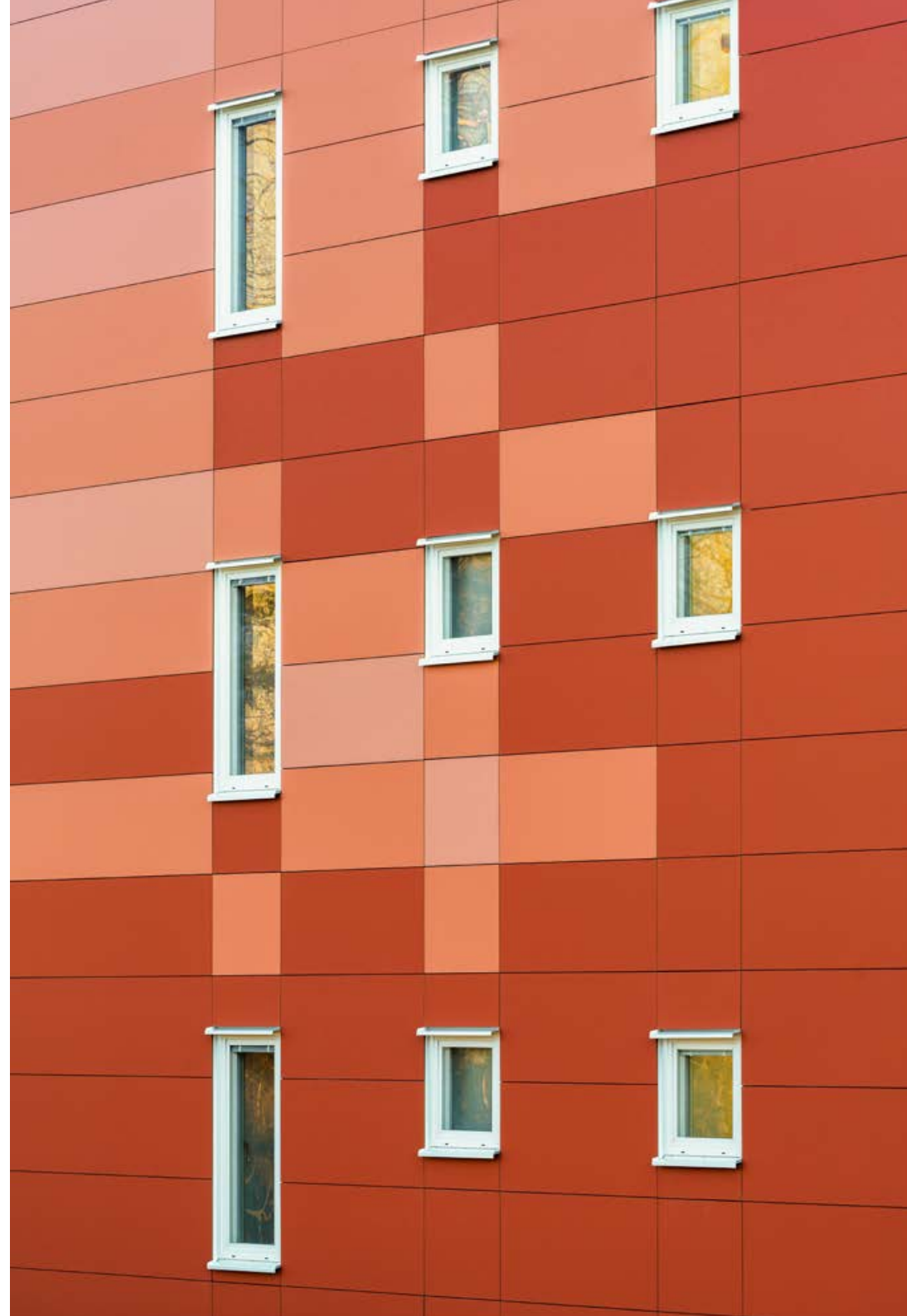
**Used Rockpanel A2 colours for this project:**

NCS S 4040-Y80R, NCS S 3040-Y70R, NCS S 3030-Y70R,  
NCS S 0502-Y



# Get inspired

Let Rockpanel Colours inspire you.  
For more inspirational reference cases,  
visit [www.rockpanel.co.uk](http://www.rockpanel.co.uk).





# Express yourself

with the Rockpanel Colours assortment

The Rockpanel Colours assortment consists of **144+ RAL/NCS colours**. But you can choose almost any RAL/NCS to express your imagination. Just contact us and we'll be happy to help you further.

The colours shown give a good impression of the actual colours. However, it is not possible in print to accurately represent the true colours.

Request free Rockpanel Colours samples via [www.rockpanel.co.uk](http://www.rockpanel.co.uk).







# Rockpanel Colours: key product properties

Rockpanel Colours	A2 8 mm	A2 9 mm	Unit
Panel dimensions	1200/1250 x 2500/3050	1200/1250 x 2500/3050	mm
Thickness	8	9	mm
Weight	9.4	11.25	kg/m <sup>2</sup>
Fire classification*	A2-s1,d0	A2-s1,d0	Euroclass EN 13501-1
Colour stability (5000h)	3-4 or better 4 or better (ProtectPlus)	3-4 or better 4 or better (ProtectPlus)	Class on greyscale
Density, nominal	1170	1250	kg/m <sup>3</sup>
Thermal conductivity	0.47	0.55	W/m·K
Water vapour permeability at 23°C and 85% RH	< 1.7	NPD	m
Water vapour permeability ProtectPlus at 23 °C and 85% RH	< 3.2	NPD	m
Cumulative dimensional change % (length)	0.072	0,064	%
Cumulative dimensional change % (width)	0.072	0.064	%
Bending strength, length and width (f <sub>05</sub> )	≥ 27	≥ 25.5	N/mm <sup>2</sup>
Modus of elasticity m(E)	≥ 4015	≥ 4740	N/mm <sup>2</sup>

\* The Euroclass-classification of all Rockpanel products is based on testing with non-combustible mineral wool insulation. For the field of application covered by the classification, please see the relevant Declaration of Performance. For high-rise buildings and high-risk buildings Rockpanel recommends the application of non-combustible (Euroclass A1-A2) cladding and insulation. For more information on availability and delivery times, visit [rockpanel.co.uk](http://rockpanel.co.uk).



## IT COMES FROM **WITHIN.**

Rockpanel is recognised for its blend of natural qualities that make it a unique choice for exterior cladding and other architectural applications.

Derived from the abundantly available rock, basalt, Rockpanel possess inherent natural properties that contribute to their durability, sustainability, fire resilience, ease of installation and aesthetic versatility.

Learn more about the benefits of Rockpanel.



## **Sustainability**

Rockpanel is made from the natural abundant resource basalt together with recycled materials and is endlessly recyclable.

Rockpanel is also Cradle to Cradle certified® at silver level on Rockpanel Colours and Rockpanel Natural, our base board, verifying that the products are safe, more sustainable, and are supporting a circular product life cycle, contributing to a more sustainable future.

## **Design Freedom**

With more than 200 colours and designs available, plus the option to customize, Rockpanel offers design freedom with the option to bend and curve.

## **Fire Resilience**

Thanks to its inherent natural qualities, Rockpanel is classified as A2-s1,d0 non-combustible, ensuring high fire resilience for architectural applications.

## **Ease of use**

Rockpanel is light-weight, can be cut with standard woodworking tools and no edge treatment is needed. Our decorative cladding is also dimensionally stable.

## **Durability**

Avoid fading, lack of shape retention, weathering, rot and fungal decay – the aesthetic and functional durability of Rockpanel facade cladding is crucial to its longevity. Rockpanel facade boards have an officially confirmed lifetime of 50 years by an independent body (ETA).



# RELEASE THE NATURAL POWER OF STONE TO ENRICH MODERN LIVING.

## We have a clear goal.

We want to make stone come alive in all its facets. This is our mission, which represents a new chapter in the history of the Rockwool Group. Let's start it together!

## We are a family.

At the ROCKWOOL Group, we are committed to enriching people's lives. Our range of products reflects the diversity of the world's needs, supporting you in enjoying the comforts of modern living while reducing your carbon footprint along the way.



ROCKWOOL thermal insulation helps in providing a safe environment for your little ones.



Rockfon products don't just keep the sound where you want it, they help keep every word or note crisp and clean.



Our innovative facade solutions give you the freedom to explore the boundaries of your wildest design dreams. So, if you can imagine it, you can build it.



Our intelligent brake fibres make braking a precise art even in the most difficult conditions.



Our precision growing products increase the amount you can grow, improve the quality of what you grow, and limit your operating risks.

## MADE FROM STONE.



[www.rockpanel.co.uk](http://www.rockpanel.co.uk)

Learn more about us, ask for product samples and be inspired by attractive reference projects.



[www.instagram.com/rockpanel](https://www.instagram.com/rockpanel)

Be inspired.



[www.facebook.com/rockpanel](https://www.facebook.com/rockpanel)

Be the first to discover our latest international projects.



[www.x.com/rockpanel](https://www.x.com/rockpanel)

Follow us for the latest news and updates.



Engage and interact.



Rockpanel Colours  
Rockpanel Natural  
Rockpanel Uni